



M7.5 Earthquake, Papua New Guinea

Activation: M7.5 Earthquake and Tsunami Papua New Guinea

Situation Report 1 - period covered: 6-Aug 2019 to 8-Aug 2019

Prepared by: Humanity Road / Animals in Disaster

Situation Overview

Wednesday 7 August, 1700 local time (PNG) Papua New Guinea was struck by a magnitude 7.5 earthquake. The epicenter was located in the Central Province, and impacts are also being reported in Hela Province. Information has been slow to come out due to damage to mobile phone networks, but there are early reports coming through describing significant damage. Hundreds of aftershocks have occurred including a magnitude 6.2 earthquake 56km SW of Port Moresby.

Local media are reporting that at least 33 people have died as a result of a tsunami that hit Port Moresby on 7 August. The country's Post Courier says that at least 2 people have died in a landslide in northern Port Moresby, where 200 homes were also damaged. It is feared that the death toll could rise as the search for survivors is ongoing.

Initial estimates are the tsunami reached over 10 meters in height as it came ashore. Prior to the tsunami, heavy rain, which has been falling since 1 August, struck after a long dry spell. According to WMO figures, 53 mm of rain was recorded in 24 hours in Port Moresby between 4 and 5 August.

This report is based on early impact indications found in social media.

Twitter handles

[@Humanityroad](https://twitter.com/Humanityroad)

[@Disasteranimals](https://twitter.com/Disasteranimals)

[@jAidDog](https://twitter.com/jAidDog)

[@DAFNReady](https://twitter.com/DAFNReady)

Facebook pages

[Humanity Road](https://www.facebook.com/HumanityRoad)

[Animals in Disaster](https://www.facebook.com/AnimalsinDisaster)

About Humanity Road: Founded in 2010 as a 501(c)3 non-profit corporation, [Humanity Road](https://www.humanityroad.org) is a leader in the field of online disaster response. Through skilled and self-directed work teams, Humanity Road and its network of global volunteers aim to provide the public and disaster responders worldwide with timely and accurate aid information. Providing such information helps

individuals survive, sustain, and reunite with loved ones. For more information, please visit www.humanityroad.org.

Table of Contents

Situation Overview	3
Significant Updates (most recent first)	3
National Links	4
Regional and Local Links	4
Emergency Numbers	4
Shelter	5
Maps and Situational Awareness	5
Hospitals	6
Special Needs Populations	6
Airports	6
Roads / Bridges	7
Communications	7
Power and Fuel	7
Pictures and Videos	7
Twitter Accounts	8
FaceBook Accounts	8
Traditional Media (TV, Radio, Newspapers)	8

Situation Overview

On Wednesday 7 August, 1700 local time (PNG) Papua New Guinea was struck by a magnitude 7.5 earthquake. Papua New Guinea was struck by a magnitude 7.5 earthquake, 35 km deep, 89km SSW of Port Moresby. [source](#) The epicenter was located in the Central Province, and impacts are also being reported in Hela Province. The area is in the mountains and remote. Information has been slow to come out due to damage to mobile phone networks, but there are early indications of significant damage. Hundreds of aftershocks have occurred including a magnitude 6.2 earthquake 56km SW of Port Moresby. [source](#)

Significant Updates (most recent first)

27 Feb:

- Central Province - Inu village in Kutubu - more than 1,000 people are reportedly in need of rescue as they are now stranded on an island that is sinking after the lake rose up and covered parts of the village including a hospital and school [source](#)
- Governor of Hela province, Philip Undialu, told local media the damage was "extensive". "Our police station, courthouse, hospital ... even private houses have been ripped apart or sunk into the ground," [source](#)
- A landslide occurred in Port Moresby, and survivors are being searched for. [source](#)
- People have been injured and buildings damaged in Moro in the Central province. [source](#)
- According to the PNG Police, up to 400,000 people across 4 provinces may be impacted. [source](#)
- Police have so far said that 14 people have been confirmed dead, including three from Poroma, south of Port Moresby. [source](#)
- The number of deaths is unconfirmed, but there are reports of deaths in Port Moresby and other areas in Central Province. There are also unconfirmed reports of 300 injured. Communications are down, but reports are being made using satellite phones. Power is also out, and some roads into the area are blocked by landslips. There are reports filtering through of extensive damage. [source](#)
- There has been no communication with Tari, the capital of Hela Province. It has a population of over 8,000 people and is about 30 km from the 7.5 earthquake epicenter. [source](#)
- PNGDF is working to establish communications with Tari and Komo. Currently the only method of communications is via VHF communications from the Mission Aviation Fellowship [source](#)
- There are reports of deaths in the remote Kutubu region in Central province. [source](#)
- Missionary Sally Lloyd has confirmed deaths of 14 people from the Edolo tribe (Border Western Province and Hela). They were killed by a landslide triggered by the earthquake while walking from Huiya in the Bosavi valley to Komo to try to sell produce. [source](#)
- Buildings built in 1952 by the early missionaries (APCM now ECPNG) in Halongali village, Tari, Hela Province are all collapsed. A temporary canvas house has been put up to accommodate the workers who have been serving the church and operating from here, ECPNG Headquarters. (photos) [source](#)
- @ExxonMobil_PNG Hides Gas Conditioning facility has experienced damage [Photo](#)
- Due to the damage to the Hides camp quarters and continuing aftershocks, ExxonMobil PNG is putting plans in place to evacuate non-essential staff," the company said in an emailed

statement. Gas is processed at Hides and transported along a 700-kilometre line that feeds a liquefied natural gas plant near Port Moresby for shipping. [source](#)

7 Aug:

- PNG Disaster Management Team Situation Update No 2, 26 Feb. [source](#)
- The bodies of 3 people killed by the earthquake have been taken to Port Moresby Hospital. [source](#)
- The government has dispatched disaster assessment teams to the Central and Hela provinces. The National Disaster Centre is working with local authorities, and the PNG Defence Force has been mobilized to assist with assessments, aid delivery, and restoration of services and infrastructure. [source](#)
- Red Cross volunteers close to the epicenter could not be contacted due to mobile phone network damage. [source](#)

National Links

- National Disaster Centre: [website](#), [facebook](#)
- Papua New Guinea Red Cross: [website](#), [facebook](#), [@PNGRedCross](#)
- PNG Defence Force: [website](#), [facebook](#)
- National Information & Communications Technology Authority of PNG (NICTA): [website](#), [facebook](#)

Regional and Local Links

Central Province

- The provincial capital is Port Moresby. Population 515,511 as of 2011. Languages include: Anggal Heneng, Imbongu, Kewa, and Wiru, Biami, Foe, and Fasu. [source](#)
- Provincial Disaster Office contacts: [website](#)

Emergency Numbers

Emergency Phone Numbers

- Police, fire, ambulance: 000
- Other emergency numbers: <http://www.pngbd.com/emergency.php>

Information Helplines

- PNG Red Cross Society - Ph: (675) 325 8579/ 7016, Fax: (675) 325 9714, Email: communications@redcross.org.pg. [@PNGRedCross](#)

Reunification Hotlines and Websites

- PNG Red Cross Society - Ph: (675) 325 8579/ 7016, Fax: (675) 325 9714, Email: communications@redcross.org.pg. [@PNGRedCross](https://www.facebook.com/PNGRedCross)

Shelter

The total population of DCP 1 LNG SITE and PAPA LEALEA village is around 3000 people.

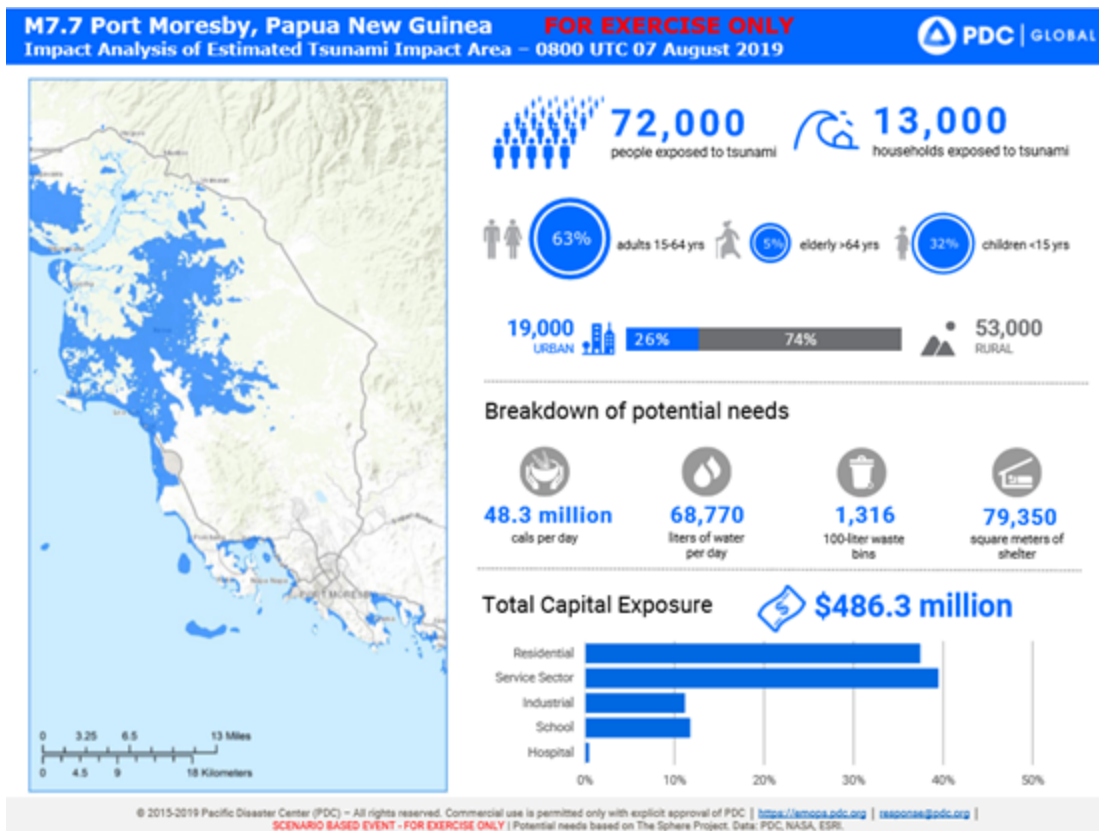
- LNG Site workers request cots, water, food and blankets for 500 people.
- Papa/Lealea villagers about 1500 people request food, water, blankets, cots.
- Shelters in Lealea are without power. Request assistance in obtaining portable electric generation capabilities.
- No communications in the area. Request support in re-establishing communications to Port Moresby.

The total population of DCP 2 at March Girls resort and Gaire village is around 3000 people.

- March Girls Resort request cots, water, food and blankets for 500 people.
- March Girls Resort requires assistance to evacuate 20 injured guests.
- Gaire villagers request food, water, blankets, and cots for 1000 people.

Maps and Situational Awareness

8 Aug 19 Earthquake Map PDC PNG.



Hospitals

Status of Hospitals / Clinics

There are 2 medical facilities in the area. One Medical Centre in the LNG Plant Site and 1 Aid Post in the village.

- 5 villagers critically hurt and require immediate air support to be flown to Port Moresby General Hospital.
- Potential outbreak of infectious disease in the area, and LNG Medical Centre requires extra medical personnel and drugs.
- Aid Post is without power and communications – request support for both.

Hospitals:

Health facilities [interactive Google Map](#)

Port Moresby General Hospital

Coordinates: -6.127262, 143.652501

PO BOX 63 251

Central Province - Port Moresby

Telephone: 5491166

website: none, social media: none

Nearby cities: Wewak, Lae, Muara Tami

Special Needs Populations

To be determined

Airports

Lists of Airports / Links

[Airports list](#) There are over 500 local and regional airstrips and airports in PNG - many are operated by private companies. The Main airport is [Port Moresby Jackson's International Airport](#). Airlines flying into PNG include Air Niugini, Airlines of PNG, Airlink limited and Qantas Airways.

Visa Requirements <http://www.immigration.gov.pg/visa.html>

Customs Requirements [Travelers information](#)

Roads / Bridges

Status

- Cell phone network is inoperable due to damage to towers in affected areas.
- Wells and pumped water is likely contaminated. Request assistance in getting out boil water messages and getting water to residents.
- Power generation and transmission facilities are damaged in LNG Plant Site.
- Request assistance in securing perimeter around LNG plant site due to potential leaks.
- The LNG Bridge for loading of LNG cargo is damaged.
- The village bridge that connects both villages is destroyed.

Communications

Status

- Cell phone network is inoperable due to towers damage in affected areas.
- Power generation and transmission facilities are damaged. Request portable power generation.
- March girls Water tank that supplies water to the surrounding areas is contaminated. Request assistance in water distribution.

Useful Links:

- Digicel PNG - Tel: +675 7222 2222, Email: CustomerCare.PNG@digicelgroup.com, [website](#), [facebook](#), [@DigicelPNG](#)

Power and Fuel

Status

- 8 Aug: Power is out in Hela and Central provinces. [source](#)

Useful Links:

- PNG Power Ltd - [website](#), National Call Centre Numbers: 7090 8000 / 7653 5272 / 7652 5261 or email us: callcentre@pngpower.com.pg

Pictures and Videos

8 Aug

- Photos of people looking for survivors following landslip in Port Moresby. [source](#)
- Port Moresby road has suffered major damage, 60m landslide [Source](#)
- Komo Airport landing strip damaged [Photo1](#), [Photo2](#)
- EMTV video of National Disaster Management Office update. [source](#)

Twitter Accounts

Hashtags

#PNG #PapuaNewGuinea #PNGquake

Twitter Accounts of Interest

- Humanity Road Papua New Guinea [twitter list](#)
- Local citizen Twitter account [Twitter ID](#)

FaceBook Accounts

- [NZ Citizen](#) in PNG Updating with photos and video on Facebook
- [World Health Organization, Papua New Guinea](#)
- [ADRA Papua New Guinea](#) (NGO)
- [PNG Red Cross Society](#)

Traditional Media (TV, Radio, Newspapers)

- Earthquake Reporter [Website](#)
- EMTv Online, Call +675 325 7322 [website](#) , [@EMTVOnline](#), [facebook](#)
- Loop PNG: [website](#), [facebook](#), [@looppng](#)
- Post Courier: [website](#), [facebook](#), [@Post_Courier](#)
- The National: [website](#)
- PNG Latest News / Info: [facebook](#), [@PngPles](#)