

Megacity, especially Characteristics of Capital Tokyo

The wooden buildings located in the Old Downtown District have the possibility of collapsing and catching on fire.



The Documents of the Great Kanto Earthquake



Megacity, especially Characteristics of Capital Tokyo

Liquefaction in the Bay Area where many reclaimed areas exist



Secondary disasters (Special Disasters) occur in the industrial area

Distribution Map of Toxic Industrial Chemical (TIC)



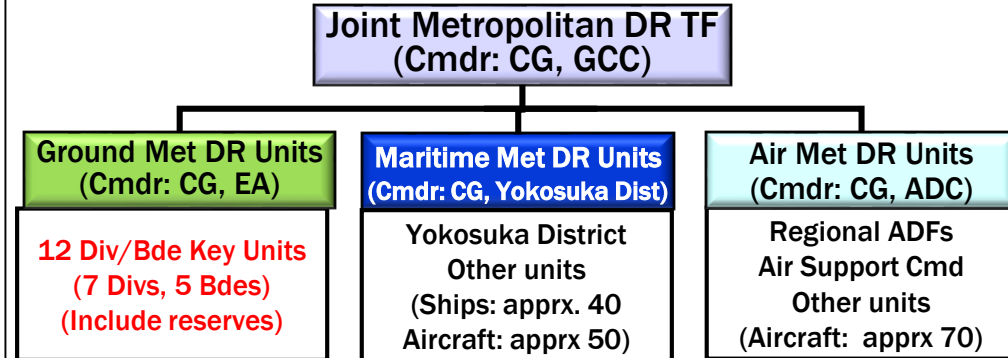
Characteristics of JSDF's Response to Tokyo Inland Earthquake

Force Concentration with Air & Waterways

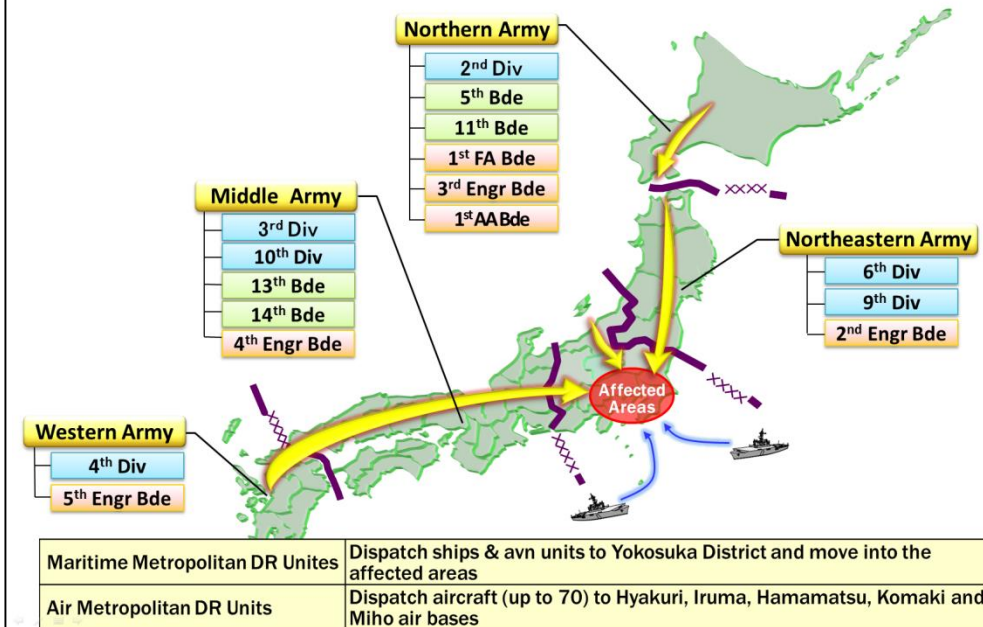


JTF's Response

Organization of JTF for Tokyo Inland Earthquake



Concentration of JTF in the Metropolitan Areas



Characteristics of JSDF's Response to Tokyo Inland Earthquake

Camp Asaka's Value



Response to Special Incidents



Characteristics of JSDF's Response to Tokyo Inland Earthquake

Maintaining Deterrence/Response Posture



Continue information collection in areas surrounding Japan even when a major disaster occurs